



OKLAHOMA HERITAGE Association
GAYLORD-PICKENS Museum

HERITAGE TIMES

Telling Oklahoma's Story Through Its People

GENEROSITY • INDIVIDUALISM • OPTIMISM • PERSEVERANCE • PIONEER SPIRIT

In **Lesson 2** students will explore some of the personalities that have played a role in Oklahoma's political history.

Featured Oklahomans

Hannah Atkins
Cassius Cade
Enoch Kelly Haney
William Holloway
Vicki Miles-LaGrange
William B. Pine
Alice Robertson
Juanita Kidd Stout
Alma Bell Wilson

Alice Robertson

Born near present-day Muskogee, Alice Robertson began her professional career as a teacher at her parent's Tullahassee Mission School for the Creek Nation. Affectionately known as "Miss Alice," she served as a teacher at the Creek Nation school in Okmulgee, was the Director of Minerva Home, a boarding school for girls and now Tulsa University, served as the Indian Commission's stenographer during negotiations for land in the Cherokee Outlet, was the United States School Supervisor for the Creek Nation, and served as America's first female postmaster.

Upon the completion of her home on Agency Hill west of Muskogee she dubbed the residence, and later her cafeteria, *Sawokla*, which means "gathering place" in the Creek language. Oklahoma's Third District elected her to Congress by a majority vote, making her only the second woman to sit in the House of Representatives (1920-1923).

Elementary Activity: Draw a picture of one of the "gathering places" in the local community.

Secondary Activity: Who was the first female elected in the community? What was her role and subsequent achievements?



William B. Pine

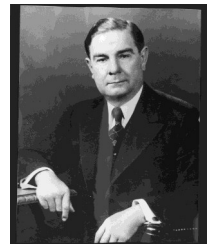
William Bliss Pine came to Oklahoma after "catching oil fever" and went on to use self-taught geology in the Gotebo and Ardmore fields, helping to open the Big Pasture oil field.

When he sold a block of leases in the Okmulgee district, Pine was well on his way to becoming one of the largest oil operators in the Southwest.

He made his home in Okmulgee and was nominated for the United States Senate in 1924, defeating Jack Walton in the largest majority ever cast for public office in Oklahoma to that time. Pine said "I have no pet theories of government, no bills to introduce, and no axes to grind. The up-building of the State of Oklahoma is the aim and desire of my heart."

Elementary Activity: Explore the oil fields in the region.

Secondary Activity: What is the largest oil field in the region? Who discovered it and when?



Juanita Kidd Stout

Born in Wewoka, Juanita Kidd Stout was the first African American woman admitted to the Oklahoma Bar and the first to be elected to the bench in the United States.

Stout was educated at Lincoln University in Missouri, the universities of Iowa, Colorado, Minnesota, and Indiana. She taught music in Seminole and at Booker T. Washington High School in Sand Springs.

After settling with her hus-

band in Philadelphia in the 1950s, she served as Assistant District Attorney. In 1959, she was elected to the bench as Judge of the County Court of Philadelphia and was re-elected to the post twice by the highest vote margin given any qualified judge at that time. Her life story has appeared in *Time*, *Life*, *Ebony*, *Jet*, and *The Wall Street Journal*.

President John F. Kennedy appointed her as a member of the U.S. Delegation to Kenya

and American Specialist at the State Department.

Elementary Activity:

Write a one-page biography on a female member of the court.

Secondary Activity: Beginning with the first appointment, study the trends of gender and race in appointments to the court.



Words of Wisdom
from the
Oklahoma Hall
of Fame

“If we join hands as true believers in equality and justice for all, we can live together in harmony.”
 -Hannah Atkins
 Inducted 2000

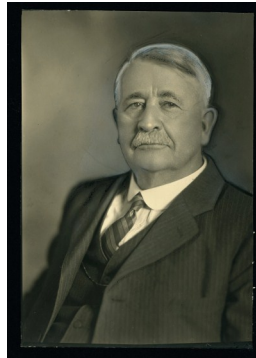
“I would like to think I was able to rise above poverty, illiteracy, racism and bigotry, to teach how to bridge a diverse population in Oklahoma. I always wanted to make a positive change.”
 -George Henderson
 Inducted 2003

“If you do what you feel is right, you have nothing to be afraid of. You always have the strength of your convictions to buoy you.”
 -Alma Wilson
 Inducted 1996

Cassius Cade

At the opening of the territory on April 22, 1889, Cade was among the first homesteaders in Lisbon, now Kingfisher. He served as the town’s first acting mayor.

He later moved his family to Shawnee and worked for the Railway Company. He was the Republican State Chairman from 1902 to 1904 and served as campaign manager for Bird McGuire in his election to Congress in 1902.



Cade served as the last Republican National Committeeman for Oklahoma Territory from 1904 to 1908 and the first Republican National Committeeman for the State of Oklahoma through 1912. Cade was appointed to the Oklahoma State Board of Public Affairs in 1930.

Elementary Activity: Who was the first mayor in the city/town where the school is located?

Secondary Activity: Research the responsibilities of the first mayor compared to the current mayor? What has stayed the same? What is different?



Hannah Atkins

A North Carolina native, Atkins received her degrees from St. Augustine College and the Graduate Library School of the University of Chicago and worked in the school’s library until moving to Oklahoma.

She attained her Masters Degree in Public Administration from the University of Oklahoma and was elected to the House of Representatives in 1968, where she chaired the Public and Mental Health Committee. Atkins was the first

African-American woman to be elected to the Oklahoma House of Representatives in 1968.

Atkins authored landmark legislation in the fields of mental health, education, and legislative reform. President Jimmy Carter selected Atkins for duties at the United Nations and Henry Bellmon appointed her Secretary for Social Services before she was appointed to serve as Secretary of State.

Elementary Activity:

What member of the Oklahoma House of Representatives represents the district?
Secondary Activity: Explore some of the legislation authored by Atkins and explain how its benefits,



Vicki Miles-LaGrange

Vicki Miles-LaGrange, first woman U.S. Attorney in Oklahoma, was born in Oklahoma City. Selected for American Legion Auxiliary’s Girl State, Miles-LaGrange was prohibited from serving as governor at the national convention because of her race. This early experience led to her fight for equality for all Americans.

Miles-LaGrange graduated from Vassar College and Howard University School of Law. She worked at the U.S. Depart-

ment of Justice until her return to Oklahoma City. After working for the district attorney’s office, she successfully ran for the Oklahoma Senate in 1986, becoming the first African American woman elected to that body.

In September 1994 President Bill Clinton nominated Miles-LaGrange to the post of federal judge for the Tenth Circuit. The appointment made Miles-LaGrange the first African American federal judge in the

six-state district.

Elementary Activity:

Draw and color a map of the six-state district that includes Oklahoma.

Secondary Activity: Choose any member of the Tenth Circuit and explore any early experiences that shaped their desire and determination.



Enoch Kelly Haney

From Seminole County, Haney was the first full blood American Indian to serve in the Oklahoma Legislature, ultimately become chairman of the Appropriations Committee in the Oklahoma State Senate.

He authored and legislation to institute education programs for at-risk students and provided leadership for the creation of the American Indian Cultural Center in Oklahoma City.

Following his service in the Legislature, Haney was sworn in as Principal Chief of the Seminole Nation.

In addition to his political career, Haney is an internationally-recognized artist and received the title of Master Artist of the Five Civilized Tribes. Although an accomplished painter, Haney also in a talented sculptor—creating the 22-foot bronze atop the State Capitol named *The Guardian*.

Elementary Activity:

Draw *The Guardian* atop the dome of the State Capitol.

Secondary Activity:

Explore the meaning of *The Guardian*. Why does it face the

direction it does? What does it symbolize?



Did you Know?

from the
*Oklahoma Hall
of Fame*

Dewey Bartlett was Oklahoma's first Governor eligible to succeed himself in office when the state's Constitution was amended to allow successive terms in office.

During the Great Depression, **William B. Pine** produced house paint and sold thousands of gallons at \$1.00 per gallon across eastern Oklahoma.

The southern Oklahoma town of Berwyn changed its name to **Gene Autry** in 1941 to recognize the world famous cowboy's 1,500-acre ranch located near the town.

William Bennett Bizzell's 31-year record as a college president at the University of Oklahoma is one of the longest in the nation's history.

William Holloway

William Judson Holloway moved to Hugo in 1910 and served as the principal of the city's high school until he received his law degree from Cumberland University and was admitted to the Oklahoma Bar in 1915.

He served as Choctaw County attorney, was elected to the Oklahoma Senate, was acting lieutenant governor from 1925 to 1926 and became lieutenant governor in 1927.

Holloway was serving as

lieutenant governor when the impeachment trial and ouster of Governor Henry S. Johnston made him Oklahoma's Governor in 1929 and served in the post until his term ended in 1931.

He returned to private practice in Oklahoma where he served until his death in 1970.



Elementary Activity: Illustrate what a typical schoolhouse looked like in 1910.

Secondary Activity: Research the impeachment of Governor Johnston and how the responsibilities changed for Hol-

loway when he became Governor.

Alma Wilson

Born and raised in Pauls Valley, Alma Bell Wilson became the first female justice of the Supreme Court of Oklahoma in 1982 and was the first woman chief justice of that Court in 1995.

Wilson was only eight years old when she announced to her family that she would someday become a lawyer. She was the pianist during her graduation ceremony from Pauls Valley High School in 1935 and deliv-

ered the valedictory address that same evening.

She graduated ahead of schedule from the University of Oklahoma College of Law in and returned to Pauls Valley as a tax attorney. She began pursuing a judicial appointment in the 1960s and was made special district judge for Garvin and McClain counties in 1969, then district judge for Cleveland County and was finally appointed to the State Supreme Court

by Governor George Nigh in 1982.

Elementary Activity: Map the cities/towns current members of the State Supreme Court are from.
Secondary Activity: Research the criteria and thought process in appointing State Supreme County Justices.



Educational opportunities annually offered by the **Oklahoma Heritage Association** include:

- More than \$4,000,000 in scholarships to high school students.
- Heritage Week competitions for students in grades 3 through 12.
- Teen Board for students grades 9-12.
- Interactive Versus Series compare and contrast an Oklahoman from our past with his or her contemporary.
- Field trips to the Gaylord-Pickens Oklahoma Heritage Museum—voted Nickelodeon’s Parents’ Choice Best Pick for Teens.
- “I Am Oklahoma” program for students of all ages.
- *Oklahoma: Magazine of the Oklahoma Heritage Association* is distributed to high school libraries statewide.

EXECUTIVE BRANCH of STATE GOVERNMENT

GOVERNOR: Head of state and head of government; presides over the executive branch; commands the militia of the state; ensures the laws of the state are enforced; State’s chief representative and spokesperson to the other states, the United States federal government, and all foreign nations; signs all bills passed by the Legislature for them to become law; appoints heads of most state departments.

LIEUTENANT GOVERNOR: In the absence of the Governor, the Lt. Governor assumes all powers and duties of office of Governor; serves as President of the Oklahoma Senate, a position of limited *de jure* influence.

ATTORNEY GENERAL: State’s chief legal officer and adviser; represents the state in all litigation or hearings; issue opinions on laws to state officials.

SECRETARY OF STATE: State’s chief elections officer and certification official; maintains the Great Seal of Oklahoma and the original Constitution signed in 1907; responsible for various executive, legislative, and judicial functions within the State government; serves as a member of the Governor’s Cabinet.

STATE TREASURER: Administrator and manager of the state’s depository of all state funds collected by Oklahoma’s various state agencies; selects banks and investments in which to place State funds to yield profit for the State at large; maintains an accurate account of all money received and distributed by the Oklahoma State Treasury; delivers all state warrants, checks, and bonds to the Office of State Finance.

OKLAHOMA STATE SCHOOL SUPERINTENDENT: Supervises and manages the public school system of the state; serves as the chair of the Oklahoma State Board of Education; publishes school laws, opinions of the laws, and submits annual reports to the Governor on the condition of public schools; also an ex officio member of the State Emergency Fund Board and chairman of the State Career Tech Board.

INSURANCE COMMISSIONER: Administer state laws dealing with insurance companies operating in the State; audits insurance companies to make certain they pay claims to their policy holders; appointed as trustee when an insurance company faces financial issues.

AUDITOR AND INSPECTOR: Prescribes a uniform system of bookkeeping for the county treasurers and the State Treasurer; audits the books and accounts of the State Treasurer and the county treasurers.

STATE CABINET: Created in 1986 under the Executive Branch Reform Act, the Cabinet was implemented to provide better organization and administration to the various state departments, agencies, boards, commissions and other entities of the executive branch in order to “improve the effectiveness, efficiency and accountability of state government.”

OKLAHOMA LABOR COMMISSIONER: Supervises the administration of all state laws relating to labor and workplace safety and gathers and publishes information about the workforce.

OKLAHOMA CORPORATION COMMISSION: Consists of three Corporation Commissioners; regulate rates charged by and otherwise supervise all public utilities doing business within the State; regulates all cotton gin, trucking, and public transportation businesses; enforces oil and gas conservation laws and regulates pipeline companies; empowered to inspect the books and records of companies operating under their supervision and have extensive power to punish violators.

www.oklahomaheritage.com



Comments/Questions:

Gini Moore Campbell
Oklahoma Heritage Association
Gaylord-Pickens Museum
1400 Classen Drive
Oklahoma City, OK 73106
888.501.2059
405.523.3202
gmc@oklahomaheritage.com